

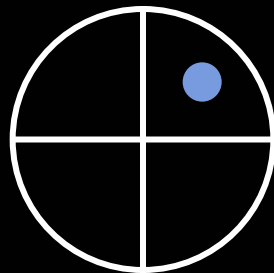
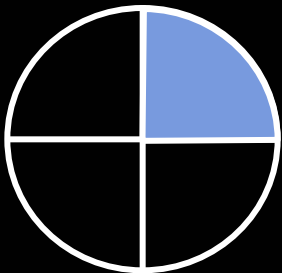
Medial Entorhinal Cortex Lesions Impair Spatial Memory Acquisition in Rats

Jena B. Hales

INC Postdoctoral Fellow, Clark Lab

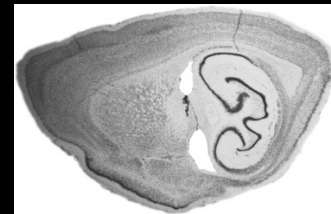
Cognitive Neuroscience Spring Retreat

Saturday May 4, 2013

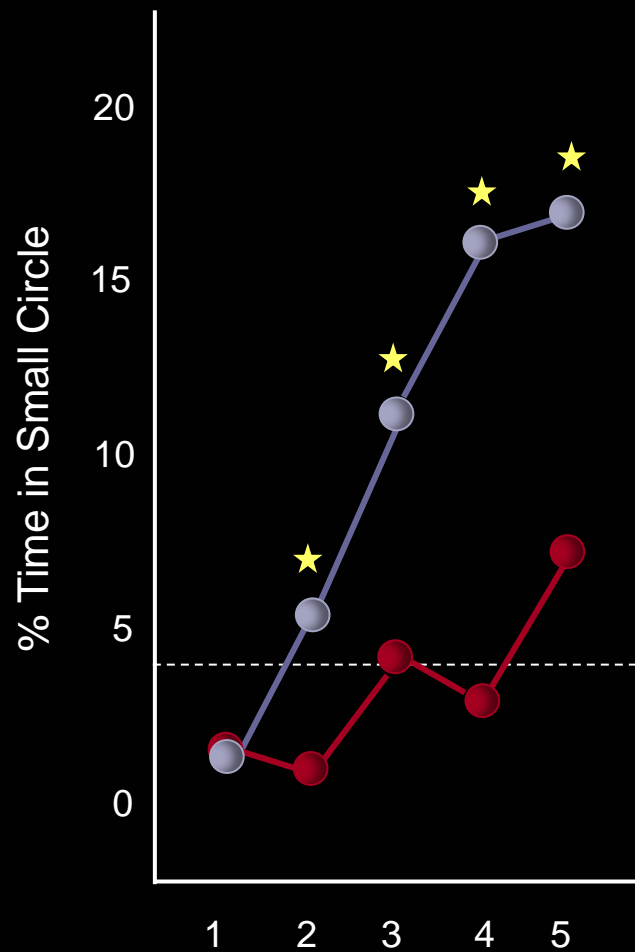
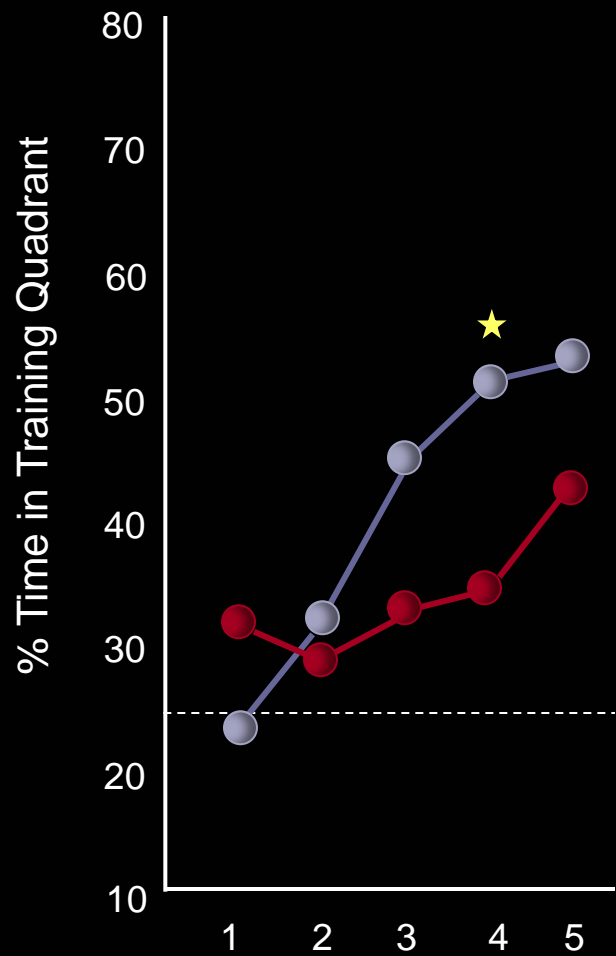
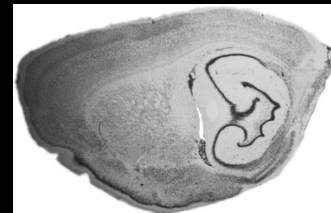


MEC

Sham

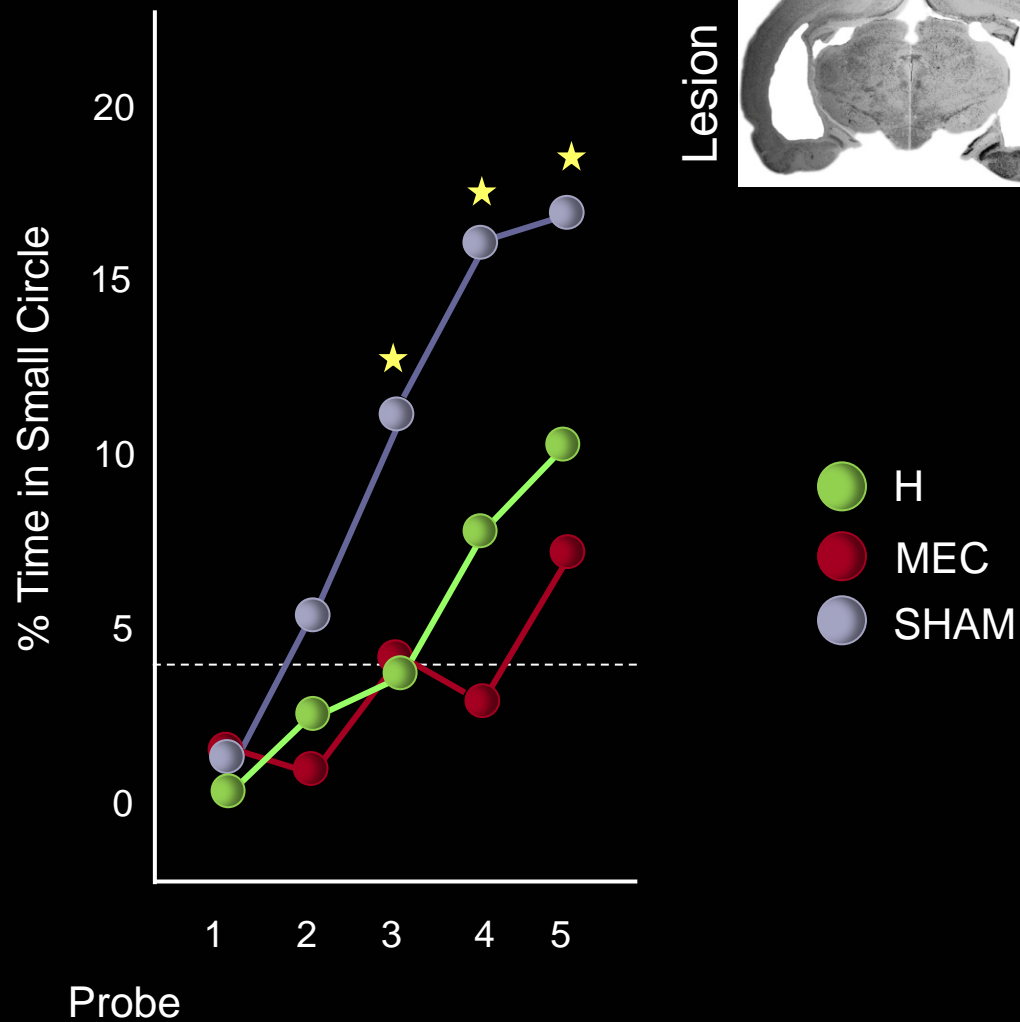
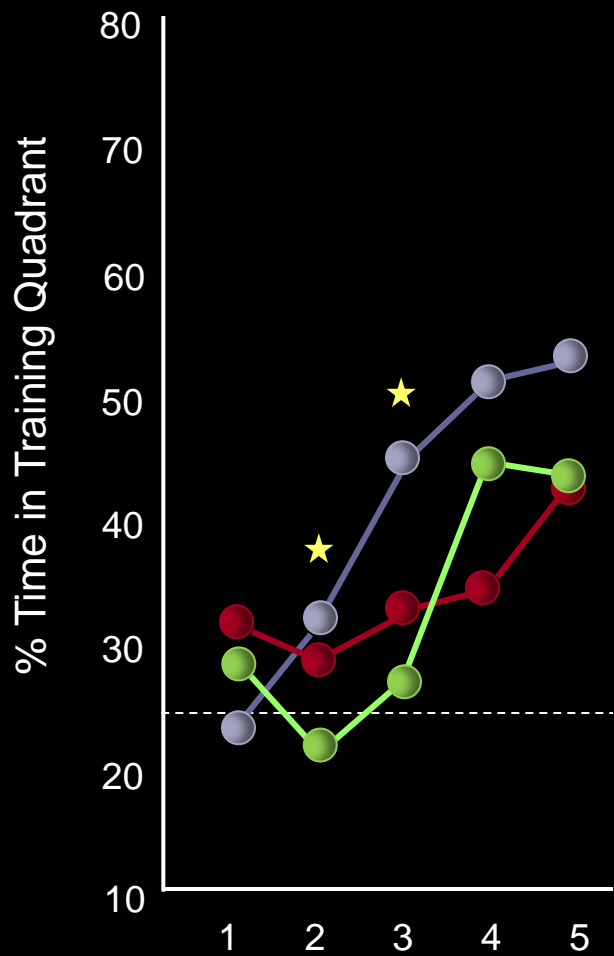
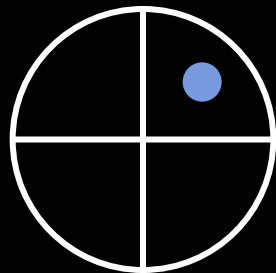
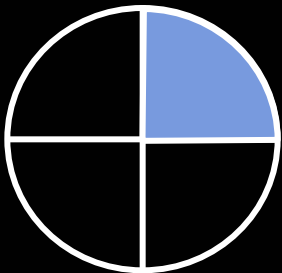


Lesion

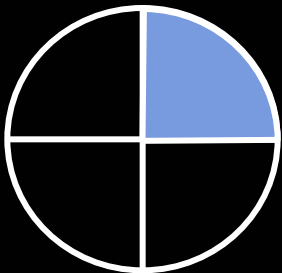


MEC
SHAM

Probe

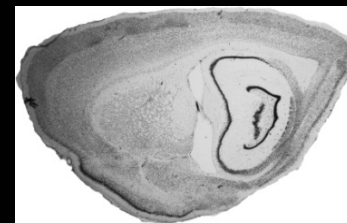


Probe



MEC+H

Sham



Lesion

